

City Project 17-24 "Loyola Way Electrolier"  
General Project Overview (Not to Scale)

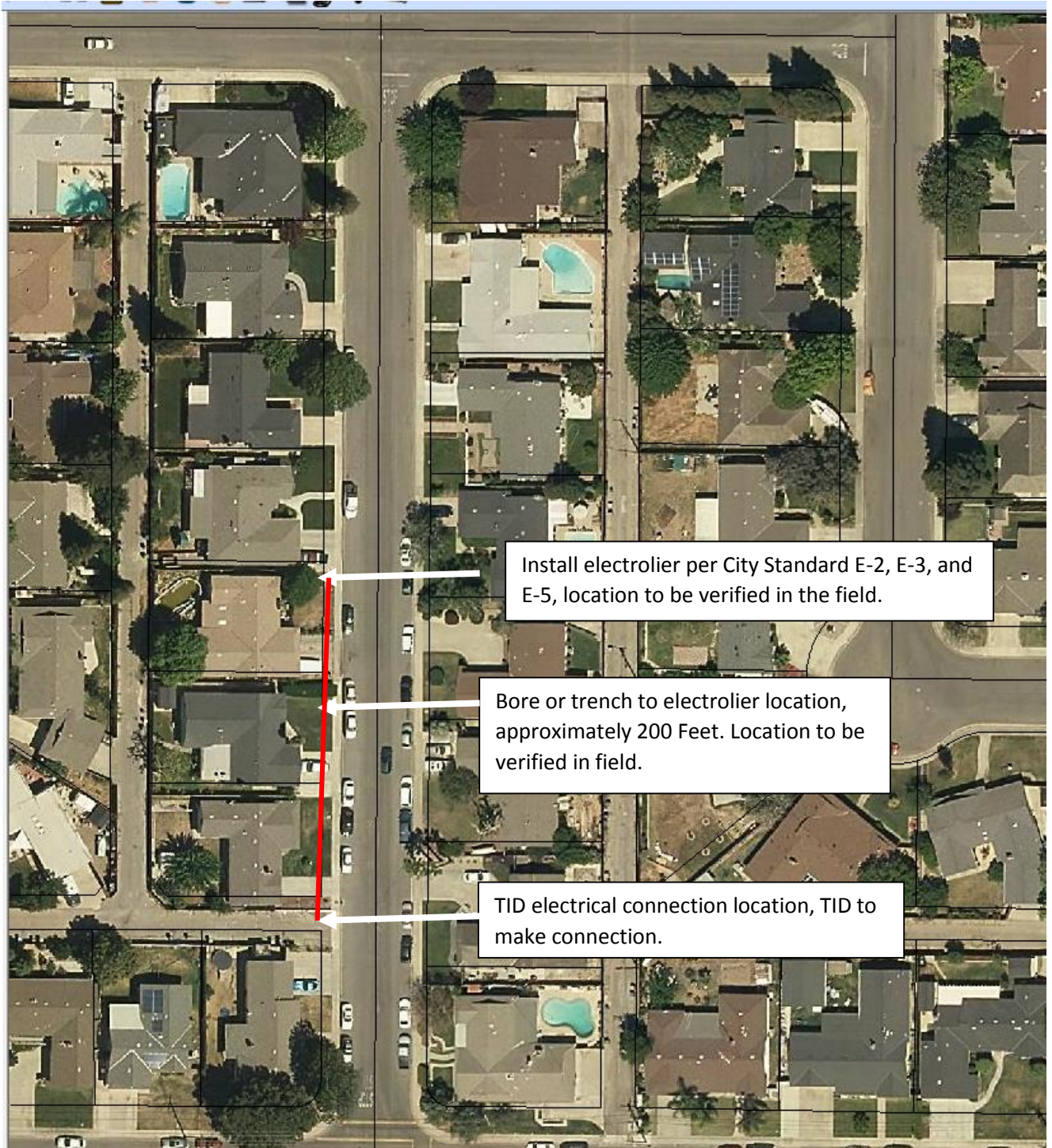


PHOTO CELL SHALL BE RIPLEY  
6390TF OR APPROVED EQUAL  
AND SHALL BE POINTED IN A  
NORTHERLY DIRECTION

LEOTEK GREENCOBRA LED  
STREET LIGHT, ORDER  
GC1-40F-MV-NW-2-GY-1A

12'

3~3/4" DIA.

LIGHTING STANDARDS SHALL  
BE AMERON COMPANY CATALOG  
NO. N 2512 OR APPROVED  
EQUAL

APPROVED STREET NAME  
SIGN MOUNTING BRACKET

STREET NAME SIGNS

3"x 5" INSPECTION PLATE

7~1/2" DIA. MIN.

25'

28'~9"

7~0"

FOR BASE DETAILS  
SEE STANDARD E-3

## STREET LIGHT

CITY OF TURLOCK

DRAWING NO.

E-2

COUNCIL APPROVAL

DEC, 2015



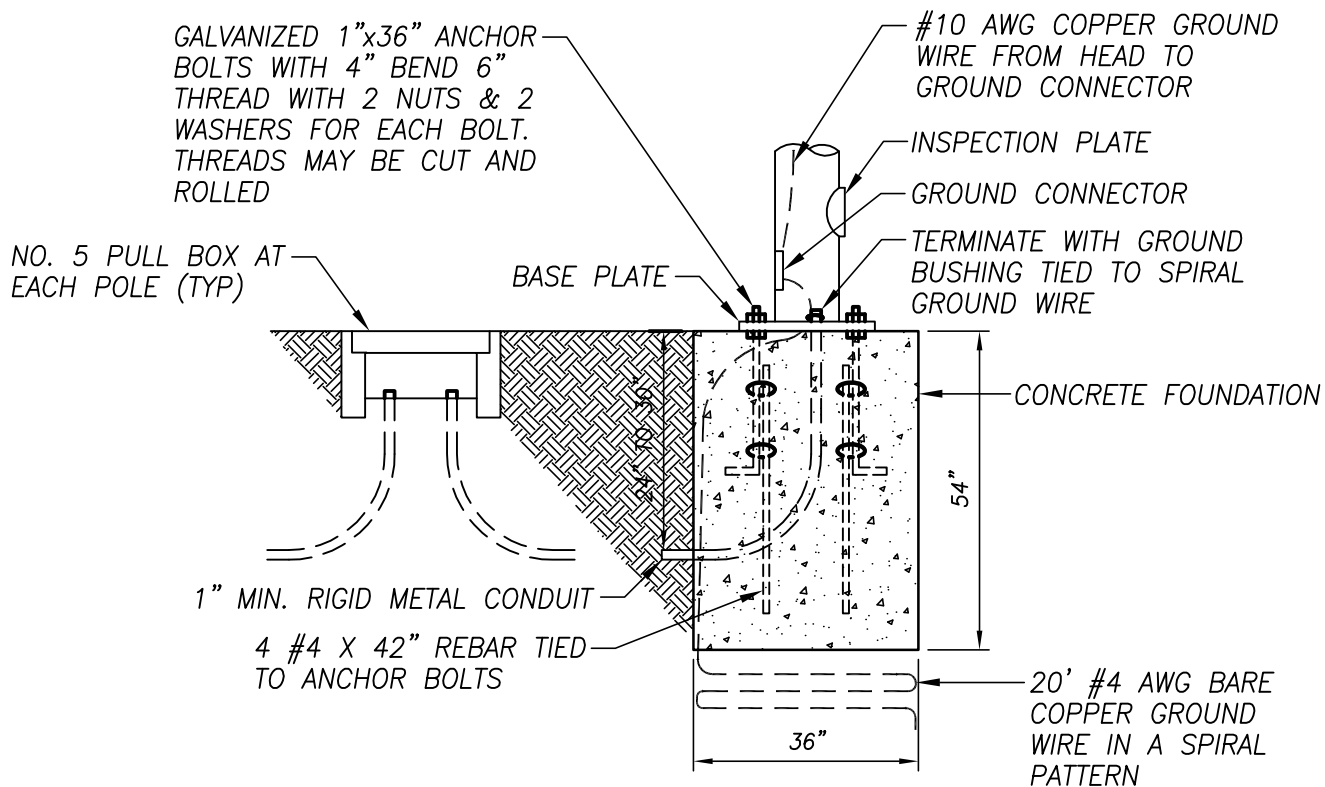
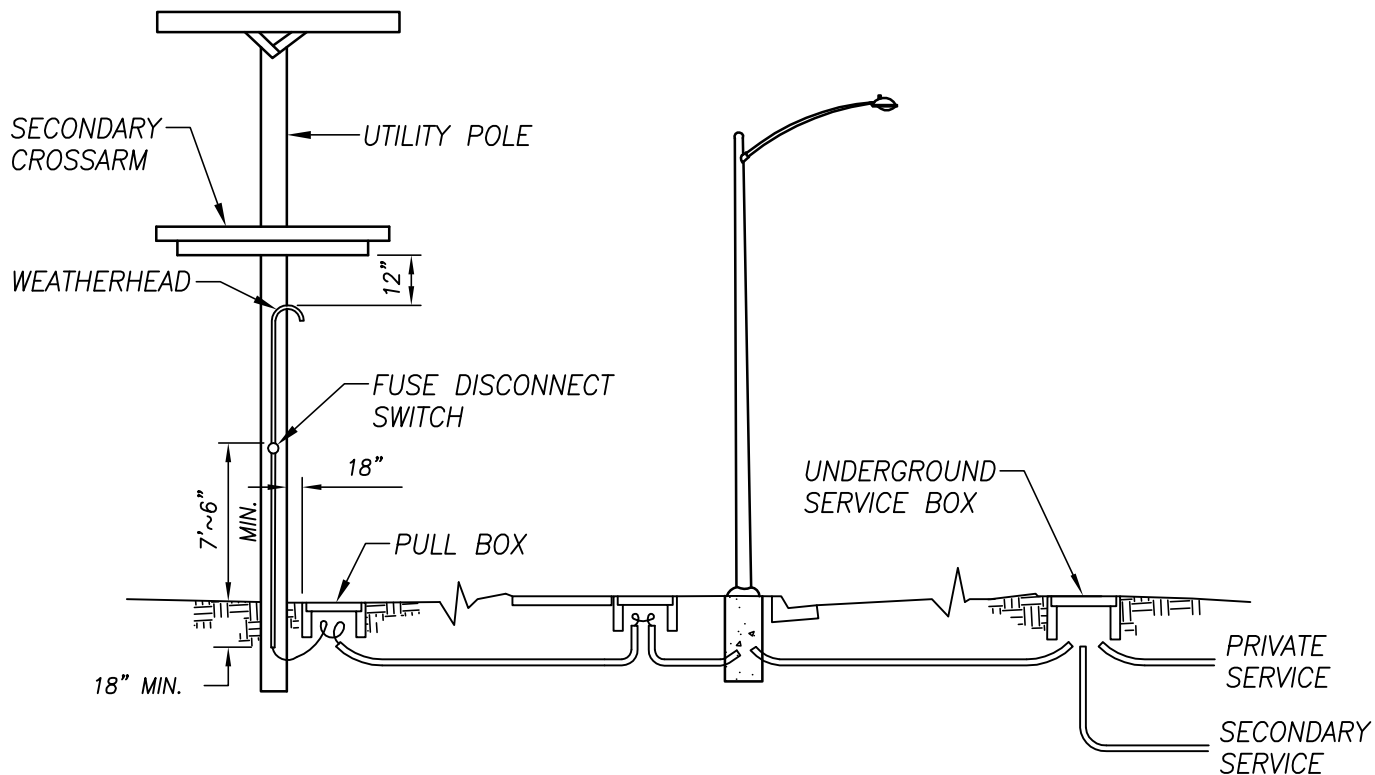
DRAWN BY: JSH

CHECK BY: NBB

SCALE: NONE

APPROVED BY:

CITY ENGINEER - MICHAEL G. PITCOCK - RCE 52694



## STREET LIGHT BASE AND CONDUIT RUN



DRAWN BY: JSH

CHECK BY: NBB

SCALE: NONE

CITY OF TURLOCK

APPROVED BY:

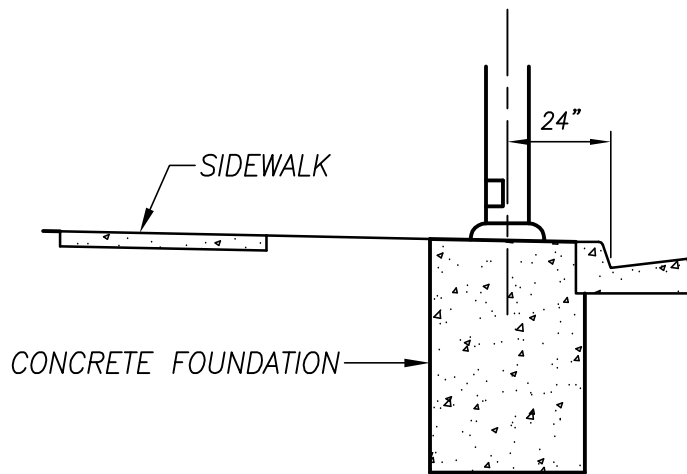
CITY ENGINEER - MICHAEL G. PITCOCK - RCE 52694

DRAWING NO.

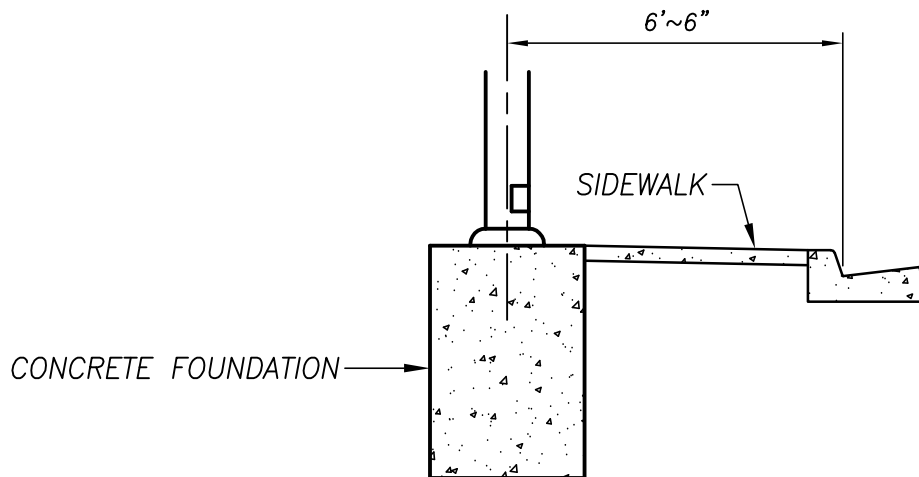
E-3

COUNCIL APPROVAL

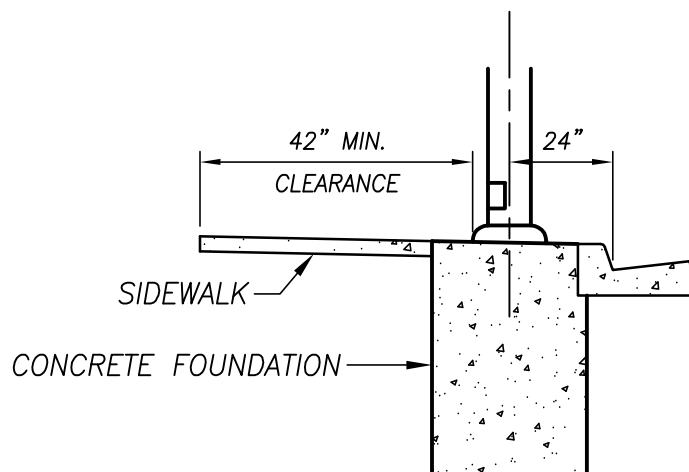
DEC, 2015



RESIDENTIAL WITH PARKWAY



RESIDENTIAL WITHOUT PARKWAY



INDUSTRIAL AND COMMERCIAL

**TYPICAL STREET LIGHT LOCATIONS**



DRAWN BY: JSH

CHECK BY: NBB

SCALE: NONE

**CITY OF TURLOCK**

APPROVED BY:

CITY ENGINEER — MICHAEL G. PITCOCK — RCE 52694

DRAWING NO.

**E-5**

COUNCIL APPROVAL

**DEC, 2015**